

Single Steering Stabilizer

Chevy HD | 2016

Part #: 55379

Rev. 092117



491 W. Garfield Ave., Coldwater, MI 49036 • Phone: 517-279-2135

E-mail: tech-bds@sporttruckusainc.com

SAFETY WARNING

BDS Suspension Co. recommends this system be installed by a professional technician. In addition to these instructions, professional knowledge of disassembly/ reassembly procedures and post installation checks must be known.

INSTALLATION INSTRUCTIONS

1. Park vehicle on clean flat and level surface. Block the rear wheels for safety.
2. Remove factory front skid plate, if equipped.
3. The front control arm bolt on the Driver's side must be removed. Trucks with aftermarket lift kits that include drop brackets will still need to follow the remaining steps, but the bolt will support the front crossmember. To safely remove the bolt, follow all steps listed below:
4. Raise front of vehicle and support frame rails with jack stands.
5. Unload the Driver's side torsion bar using appropriate tool. Remove the torsion bar key bridge to remove all load from the torsion bar. This is an important safety step.
6. Install the rivet nut into the factory hole in the frame. There is one extra rivet nut incase the installation is messed up. Follow directions at the end of the instruction sheet for how to install the rivet nut properly. If installation fails on first attempt, it is possible to tack weld the rivet nut in place to keep it from spinning (disconnect battery(s) if welding is performed). (See Page 2)
7. Remove the front lower control arm bolt.
8. Place the bracket with washer between the bracket and frame mounting point. Reattach with factory hardware. Wait until the vehicle is on the ground for final torque.
9. Attach bracket to frame with 1/2" hardware. Tighten to 55 ft-lbs.
10. Install the narrow bushing into the body end of the stabilizer with sleeve. Install the wider bushing into the rod end of the stabilizer, no sleeve is required.
11. Attach body end of stabilizer to factory mount with 12mm x 70mm hardware.
12. Attach stud pack to centerlink with the centerlock nut from bolt pack #340 (included in the stabilizer box kit). Do not use the castellated nut that comes in the stud pack. (See pass side stabilizer mount picture)
13. Install the washer from the stud pack onto the stud, followed by the bushing, another washer, and locking nut.
14. Tighten 12mm hardware and 1/2" stud nut to 55 ft-lbs, 7/16" stud nut to 45 ft-lbs.

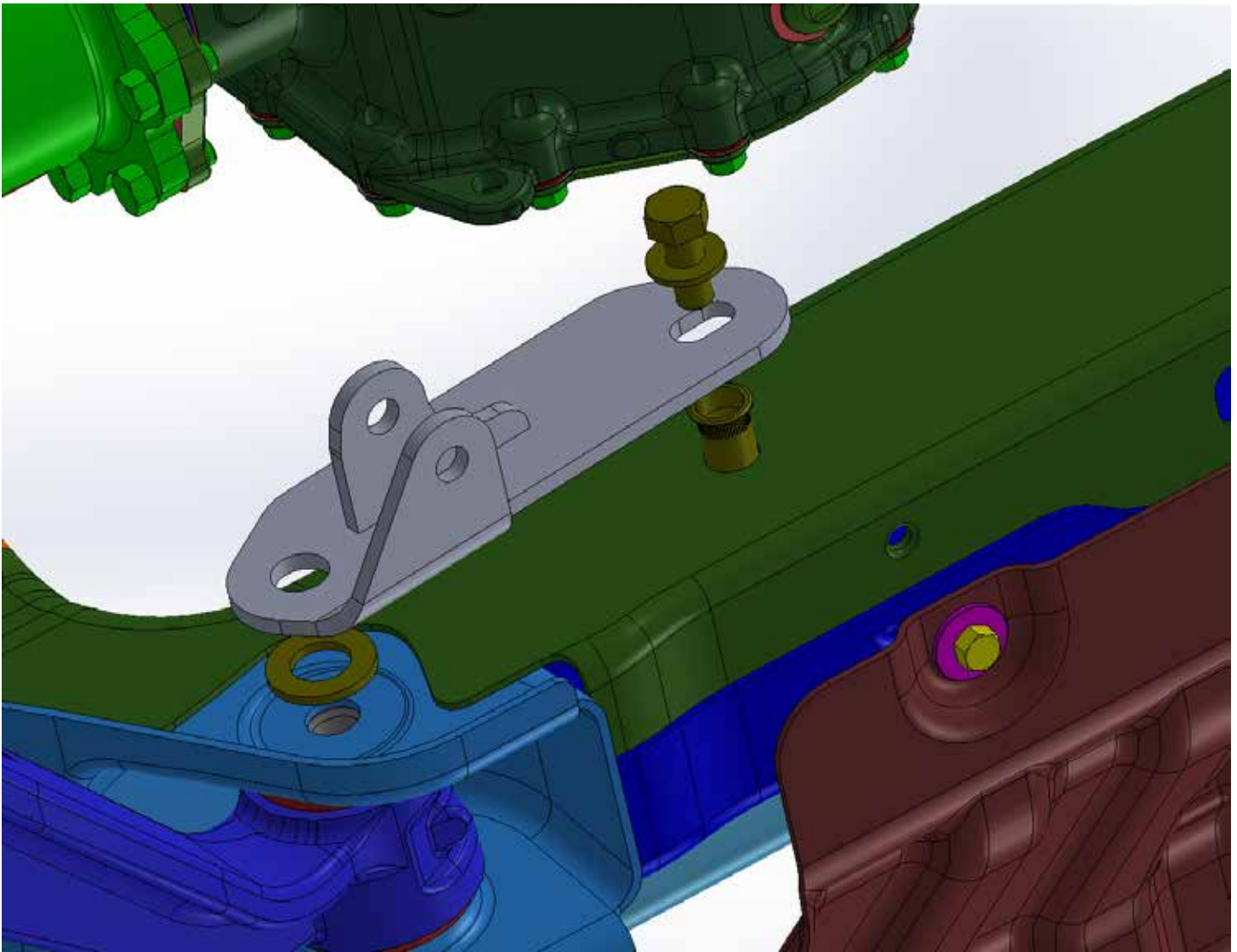
Box Kit		
Part #	Qty	Description
01589	1	Stabilizer Bracket 2016+
W34SAE	1	Spacer Washer
95105A169	2	1/2" Rivet Nut
799	1	Rivet Nut Install. Bolt Pack
B12X114	1	1/2" x 1-1/4" Bolt
W12S	1	1/2" SAE Washer

15. Reload torsion bars, and set to previous height.
16. Lower the front of the vehicle to the ground. Tighten lower control arm bolt to 180 ft-lbs.
17. Reinstall skid plate(s) if equipped.
18. Recheck after 500 miles.

PASS SIDE STABILIZER MOUNT

(DO NOT USE CASTELLATED NUT, USE CENTER LOCK NUT)





RIVET NUT INSTALLATION INSTRUCTIONS

RIVET NUT SIZING

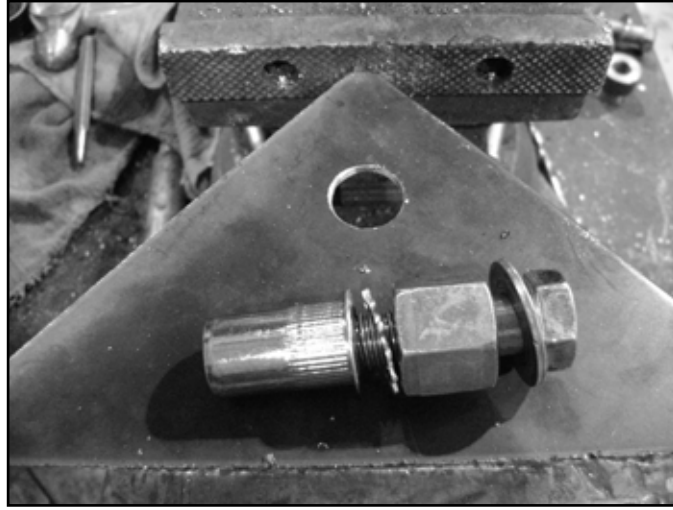
1. Verify the correct size rivet nut for the application based on the thickness of material where the rivet nut is to be installed using the following chart.

<i>Part Number</i>	<i>Thread Size</i>	<i>Body Length (in)</i>	<i>Material Thickness (in)</i>		<i>Drill Size (in)</i>
			<i>Min.</i>	<i>Max.</i>	
95105A169	1/2-13	1.150	.063	.200	11/16

RIVET NUT INSTALLATION TOOL ASSEMBLY

- For a 1/2" rivet nut, place the provided 1/2" SAE washer on a 1/2" x 2" bolt followed by a 9/16" high nut and 1/2" serrated edge lock washer. Thread this tool assembly into the rivet nut as shown. **Figure 3**

FIGURE 3



RIVET NUT INSTALLATION

- Place the installation tool with the rivet nut threaded on the end into the appropriately sized hole.



Tip

If available, an impact gun is recommended for tightening the bolt to ensure the rivet nut remains square to the hole and to ease holding the nut from spinning.

- 1/2" rivet nut, hold the nut closest to the rivet nut still with an 7/8" wrench and tighten the 1/2" bolt with a 3/4" wrench to set the rivet nut. Be sure to hold the rivet nut flush to the surface and square to the hole as it is tightened. **Figure 4**

FIGURE 4 - 1/2" RIVET NUT INSTRUCTIONS



TORQUE SPECIFICATIONS

- 1/2" rivet nuts will approach 90 ft lbs for maximum grip strength. Do not exceed 100 ft-lbs when setting the rivet nut.



Tip

If using the recommended impact gun, use caution to not exceed the recommended torque specifications.

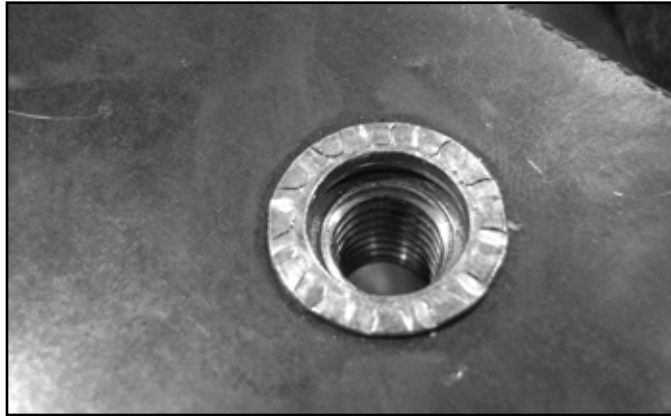
RIVET NUT TOOL REMOVAL

6. Once the center bolt is tightened, remain holding the nut from spinning with the wrench and loosen the center bolt to remove the installation tool.

! Caution **IMPORTANT** It is very important to hold the nut as the bolt is loosened because the grip of the star washer will try to spin the rivet nut and ruin the installation.

7. Verify proper installation by checking for consistent rivet nut deformation to see the threads are square and centered to the rivet nut. Figure 5.

FIGURE 5



TIME TO HAVE SOME FUN

Thank you for choosing BDS Suspension.

For questions, technical support and warranty issues relating to this BDS Suspension product, please contact your distributor/installer before contacting BDS Suspension directly.



WE WANT TO SEE YOUR RIDE!

Grab photos of your BDS-equipped truck in action and send them in for a chance to be featured. Send it in to our Bad Ass Rides customer gallery at bds-suspension.com/bar and post them on the BDS Fan Page on Facebook at facebook.com/BDSSuspensions. Don't forget about your BDS swag! BDS offers t-shirts, hoodies, decals and more available on the BDS website or through your local BDS distributor.